



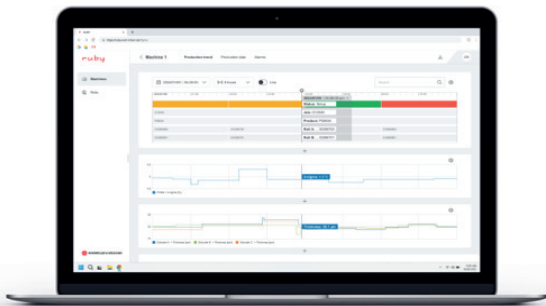
# RUBY - THE IOT SYSTEM BY W&H

## Combine your data with W&H know-how

Uncover the hidden treasure in your packaging production: **Data.**

RUBY is the IoT system to digitize your value chain. It is offered as a platform with various freely combinable extensions in order to provide you with an individually tailored range of functions.

RUBY gives you the power to not only see how your production is going, but how you can make it better. It correlates machine and quality data to help you find the best setup and settings. And it gives you live feedback when production goes off-course. RUBY allows you to dive into the IoT world step by step or build it up with our extensions - according to your needs.



## Mobile production monitoring

- ✓ Keep an eye on the production - no matter where you are
- ✓ Live machine data view
- ✓ Push notifications to be warned of delays or critical production events
- ✓ Measures can be taken immediately

## More effective

Higher productivity and better quality through digitized workflows.

## More efficient

Less waste and downtimes by data-based error detection and alarms.

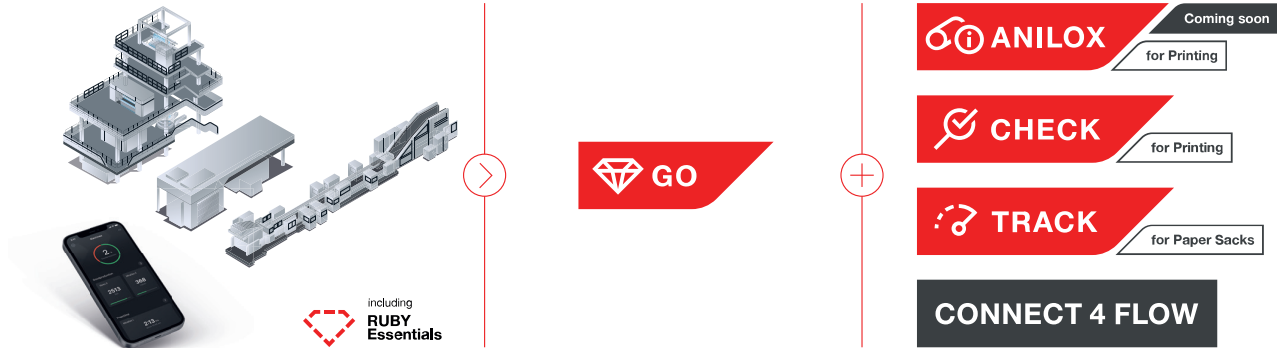
## More transparent

Production data is tracked and stored. It can be used anytime and anywhere to optimize your value chain or claim management.



Learn more about **RUBY**:  
[www.wh.group/int/en/services/ruby\\_iot\\_system/](http://www.wh.group/int/en/services/ruby_iot_system/)

# The RUBY world



## SERVICES

Training / Support / Retrofits / Connect to 3rd party machines

## Easy entry to digitization

Enter the RUBY world with every new machine and see your production data at a glance in the RUBY App. Optimize your packaging production with RUBY Go and further improve your processes with RUBY Anilox, RUBY Check, RUBY Track or Connect 4 Flow.

### Your entry with RUBY Essentials

- Included in every new W&H machine
- View your production data in the RUBY App
- Connect all your machines, incl. non W&H

### Go professional with RUBY Go

- Analyze machine settings, production data, and alarms in a user-friendly web interface
- Get real time insight into your production
- State of the art data interfaces
- Archive and restore process data independently from local systems

## Customize RUBY

Choose your upgrade options based on your needs.  
Use our extensions:

### RUBY Anilox (coming soon)

- Check anilox roller life cycle status
- Choose right anilox rollers based on data
- Accelerated set-up process

### RUBY Check

- Remote quality monitoring
- Processing of defect detection data

### RUBY Track

- Productivity overview and analyses
- KPIs and benchmarking

### Connect 4 Flow

- Centralized digital know-how transfer
- Higher quality standards, less errors
- Paperless workflow



Learn more about RUBY:  
[https://www.wh.group/int/en/services/ruby\\_iiot\\_system/](https://www.wh.group/int/en/services/ruby_iiot_system/)